



ENGLISH

**BRIXEN
BRESSANONE**

Brixen Guide 2019

BRIXEN CARD

Free public transport
in South Tyrol

5

Plose

6

Acquarena and ice rink

6

Culture and hiking
program in Brixen

7

Museums in South Tyrol

7

GUIDED TOURS

City tour Brixen

9

Thematic tours

10

Theatrical tours

12

Children's program

13

All-day hiking tours

14

Half-day hiking tours

16

Bike program

18

**THE OLD TOWN
OF BRIXEN**

The heart of Brixen:
the cathedral square
and its treasures

25

The Hofburg

26

The White Tower
(Weißer Turm)

27

Pharmacy Museum
Brixen

28

Augustinian monastery
Neustift

29

Franzensfeste Fortress

30

Castle Velthurns

31

**LEISURE AND
MOUNTAIN EXPERIENCE**

Activities

33

Summer at Mount Plose

41

Winter on Mount Plose

44

**SHOPPING AND
CUISINE**

Shopping

47

Cuisine

48

GOOD TO KNOW

Good to know /
useful details

55

INFORMATION AND DETAILS ABOUT THE
COMPLETE BRIXEN TOURISM PROGRAM
CAN BE FOUND ON OUR WEBSITE.

WWW.BRIXEN.ORG



BRIXENCARD

Discover Brixen with our all-inclusive guest card

Cultural highlights, mountain experience and leisure fun - this is what Brixen and its surroundings stand for. Our guest card, the BrixenCard, makes it easier for you to access all these offers. Your advantage? Numerous discounts and free cultural and hiking programs:

- Free public transport in South Tyrol
- Plose
- Acquarena and ice rink
- Culture and hiking program in Brixen
- Museums in South Tyrol

Our guest card is available at over 100 BrixenCard partner accommodations. It cannot be purchased! The card is valid from the day of arrival until the day of departure. All members of the family or travel group receive their own card. Please pay attention to the opening times of the programs when considering a visit.

Everything you need to know about the BrixenCard and the partner accommodations at www.brixen.org

ALL BRIXENCARD BENEFITS

Free public transport in South Tyrol

With the BrixenCard you can use the entire public transport network of South Tyrol. This includes all city and inter-city buses, all regional trains (with the designation R, RV) and the cable cars to Ritten, Meransen, Jenesien, Kohlern, Mölten and Vöran as well as the narrow-gauge railway Ritten, the funicular railway to Mendel and the Vinschger Bahn train. The Postbus to Switzerland between Mals and Müstair is also included in the BrixenCard.



Plose

With the BrixenCard you have one return trip a day with the Plose gondola lift, the Pfannspitz gondola lift and also with the Palmschoß chair lift. Attention! The BrixenCard is not a ski pass.



Acquarena and ice rink

The BrixenCard includes free admission to the Acquarena fun pool. Every day, except Sundays and public holidays, you can use the pool area for three hours for free and the sauna area at a reduced price. There is also free admission to the Brixen ice rink (open seasonally).



Culture and hiking program in Brixen

Our tourist office offers a varied cultural and hiking program. You can participate at the guided tours and hikes for a reduced price or even free of charge.

Museums in South Tyrol

With the BrixenCard you can explore over 90 museums free of charge. These include the Hofburg with the Diocesan Museum in Brixen, the Pharmacy Museum in Brixen, the Neustift Monastery, the Franzensfeste Fortress, the Archaeology Museum with the Iceman Ötzi, the Messner Mountain Museums and many more.

Guided Tours

Experience hidden cultural treasures and the most beautiful places in Brixen and its surroundings. Discover the fascinating landscapes around the city and on the mountain on hiking and biking tours. Have a look at the offer of the Tourist Office Brixen, which guarantees wonderful moments in town and on the mountains during every season.

Culture Program

REGISTRATION WITHIN 4 P.M. THE DAY BEFORE
THE GUIDED TOUR AT THE TOURIST INFO
MEETING POINT: TOURIST INFO BRIXEN,
REGENSBURGER ALLEE STREET 9
T +39 0472 275 252
INFO@BRIXEN.ORG

FEE
€ 7,00 ADULTS
FREE OF CHARGE WITH
THE BRIXENCARD



City tour Brixen

Brixen at a glance

(in German and Italian)

From 01.04. – 31.10.2019, every Monday at 5 p.m.

From 01.11.2019 – 31.03.2020, every Monday at 10 a.m.

Groups on request, also in English

Duration: 1,5 h

Thematic tours

(IN GERMAN AND ITALIAN)

REGISTRATION WITHIN 4 P.M. THE DAY BEFORE THE GUIDED TOUR

MEETING POINT: TOURIST INFO BRIXEN

T +39 0472 275 252

INFO@BRIXEN.ORG

WEDNESDAYS AT 10 A.M.

DURATION: 1,5 H

FEE

€ 7,00 ADULTS

FREE ADMISSION WITH
THE BRIXENCARD

WWW.BRIXEN.ORG/CULTURE



Blue Gold of Brixen

Water and its importance for the city of Brixen
08.05., 22.05., 12.06., 10.07., 04.09., 02.10.2019

Heaven and hell

Hidden treasures in the cathedral and cloister
of Brixen
17.04., 19.06., 24.07., 14.08., 11.09., 16.10.2019

Monastic life in Brixen

A look behind the walls of the monasteries
05.06., 17.07., 21.08., 18.09., 23.10.2019

Architectural changes in the city of Brixen

Old and new architectural treasures of the city
15.05., 26.06., 31.07., 28.08., 25.09.2019

Stufels: The origin of the city

The oldest neighbourhood of Brixen
24.04., 29.05., 03.07., 07.08., 09.10., 30.10.2019

Whispers in the dark

(in German)

Funny stories about the history of Brixen

In German: during the Holy Week 15.04., 20.04., and
every Friday, 26.04. – 31.10.2019 at 9.30 p.m.

In Italian: Every Tuesday, 16.04. – 25.10.2019
at 9.30 p.m.

Every Saturday, 30.11. – 04.01.2020 at 9 p.m.

Groups on request, also in English

Duration: 1,5 h

Guided Wine-Tour around Brixen

(in German and Italian)

All about wines from the area around
Brixen, wine tasting included

Every Friday, 19.04. – 28.06.2019

and 06.09. – 25.10.2019

Duration: 2,5 h

FEE

€ 20,00 PER PERSON

€ 12,00 WITH BRIXENCARD



Water Light Festival

09. – 25.05.2019

Local as well as international artists will transform the water
sites of Bressanone into a unique light ocean through creative
ideas and different light installations.

www.brixen.org/waterlight



Theatrical tours

(IN GERMAN AND ITALIAN)

REGISTRATION WITHIN 4 P.M. THE DAY BEFORE
THE GUIDED TOUR
MEETING POINT: TOURIST INFO BRIXEN
GROUPS ON REQUEST
T +39 0472 275 252
INFO@BRIXEN.ORG

DURATION: 1,5 H

FEE
€ 12,00 PER PERSON
€ 10,00 WITH BRIXENCARD

WWW.BRIXEN.ORG/RENDEZVOUS

„About bishops and elephants“

The history of Brixen

01.04. – 26.10.2019; 01.12.2019 – 05.01.2020:
on Saturdays, in German at 10 a.m. and in Italian
at 5 p.m. (in December at 4 p.m.)

„About witches, hangmen and scoundrels“

01.03. – 31.10.2019; 01.12.2019 – 05.01.2020
on Tuesdays at 9 p.m. in German (in December at
8 p.m.), every Thursday at 9.30 p.m. in Italian
(in December at 9 p.m.)

„About superstition and medicine“

All year on Thursdays at 5 p.m.
in German language only



Children's program

REGISTRATION WITHIN 4 P.M. THE DAY
BEFORE THE GUIDED TOUR
T +39 0472 275 252
INFO@BRIXEN.ORG



On a legendary treasure hunt on the WoodyWalk

Guided family hike with playground on the Plose

In German: 14.06. – 30.08.2019, every Friday at 10.30 a.m.

In Italian: 12.06. – 28.08.2019, every Wednesday at 10.30 a.m.

Meeting point: mountain station of the Plose gondola lift
(Kreuztal)

Duration: 2 h (of which 45 minutes walking time)

FEE
€ 15,00 FAMILYTICKET (2 ADULTS + UP TO 3 CHILDREN)
GROUPS ON REQUEST

„I spy with my eye“

Guided family tour around Brixen

For families with children between 7 and 12 years old
In German and Italian

During the Holy Week on Friday, 19 April 2019 at 10 a.m.

22.07. – 19.08.2019, every Monday at 3 p.m.

Duration: 1,5 h

FEE
€ 7,00 ADULTS
FREE OF CHARGE WITH THE BRIXENCARD

Learn to marvel again - Experience life on a farm

05.07. – 30.08.2019, every Friday at 10 a.m.

In German and Italian

Meeting point: bus stop at Neustift Monastery

Duration: 2 h

FEE
€ 15,00 ADULTS
€ 10,00 WITH BRIXENCARD



Hiking program

REGISTRATION WITHIN 4 P.M. THE DAY
BEFORE THE GUIDED TOUR
AT THE TOURIST INFO BRIXEN
T +39 0472 275 252
INFO@BRIXEN.ORG

FEE
€ 15,00 ADULTS
FREE ADMISSION WITH
THE BRIXENCARD

WWW.BRIXEN.ORG/HIKE

SUITABLE HIKING EQUIPMENT
(SHOES WITH NON-SLIP SOLE,
SNACKS AND DRINKS; 1-2 BREAKS FOR
REFRESHMENTS, OCCASIONALLY BUS
TRANSFER)



All-day hiking tours

ALPINE HIKING TOURS ON THE PLOSE
EVERY TUESDAY
MEETING POINT: AT 10 A.M. AT THE MOUNTAIN STATION
OF THE PLOSE GONDOLA LIFT (KREUZTAL)

The Brixen High Mountain Trail

Duration: 4 h, length: 11 km,
metres in height: ca. 550 m, moderate hike
04.06., 25.06., 16.07., 06.08., 27.08., 17.09., 08.10.2019

The Three Peak Tour

Duration: 5,5 h, length: 13 km,
metres in height: ca. 800 m, moderate hike
12.06., 02.07., 23.07., 13.08., 03.09., 24.09.2019

Dolomites Panoramic Trail

Duration: 4 h, length: 11 km,
metres in height: ca. 500 m, moderate hike
18.06., 09.07., 30.07., 20.08., 10.09., 01.10.2019

ALPINE HIKING TOURS AROUND BRIXEN
EVERY THURSDAY
MEETING POINT: AT 8.30 A.M.
AT THE TOURIST INFO BRIXEN

Alpine pastures of Lügen and Astjoch summit

From Lügen across the alpine pastures up to the
Astjoch, a 360° panorama platform
Duration: 4,5 h, length: 10 km,
metres in height: 700 m, easy to moderate hike
25.07., 22.08., 19.09.2019

Radlsee lake and Königsanger summit

From the Garner Wetterkreuz parking space up to
the crystal clear Radlsee lake and to the summit of
Königsanger with a magnificent view
Duration: 5 h, length: 12 km,
metres in height: ca. 1000 m, moderate hike
18.07., 05.09., 26.09.2019

On a hiking tour with "Kneipp"

From Schalders to the beautiful Schrüttenseen
lakes with exciting stories about the 5 principles of
doctor Sebastian Kneipp's health theory of water
Duration: 4,5 h, length: 13 km,
metres in height: ca. 900 m, moderate hike
04.07., 01.08., 29.08.2019

Peitlerkofel hiking circuit

Hiking circuit starting at the Würzjoch, passing the
Peitlerscharte ridge and the Gömajoch ridge.
Enjoy fantastic landscapes and mountains
Duration: 5 h, length: 13 km,
meters in height: ca. 600 m, moderate hike
11.07., 08.08., 12.09.2019

Half-day hiking tours

REGISTRATION WITHIN 4 P.M.
THE DAY BEFORE THE GUIDED TOUR
AT THE TOURIST INFO BRIXEN
T +39 0472 275 252
INFO@BRIXEN.ORG

SUITABLE HIKING EQUIPMENT
(SHOES WITH NON-SLIP SOLE)



A vineyard hike

Hike during the wonderful spring time with wine tasting.

Tuesday, 23.04., 30.04., 07.05., 14.05.
and 21.05.2019

Meeting point: at 10 a.m. at the Tourist Info
Brixen, Regensburger Allee 9

FEE, WINE TASTING INCLUDED
€ 15,00 FOR ADULTS
€ 8,00 WITH THE BRIXENCARD

Wild delicacies along the way

Hike along the herbal trail panorama path (Heilkräuter-Panoramaweg) with magical herbs including a wild herb snack.

Every Friday in June

Meeting point: at 9 a.m. at the Tourist Info Brixen
or at 9.30 a.m. at the parking space of the fire
department in Spiluck

FEE
€ 20,00 FOR ADULTS

Mountain doctors, alpine magic and herbal fairies

Discover wild herbs along the way and enjoy a wild lunch at the Zirmait Alm mountain hut and learn how to mix a plant cream.

Tuesday, 09.07., 23.07., 06.08.2019

Meeting point: at 9 a.m. at the Tourist Info
Brixen or at 9.30 a.m. at the parking space
near the Gostnerhof Inn at Spiluck.

FEE
€ 35,00 FOR ADULTS

Great Cinema on Mount Plöse - sunrise tour

Sunrise hike to the Gabler summit on the Plöse. With the Pfannspitz gondola lift to the mountain station and from there in only 45 minutes to the summit.

Enjoy the 360° panoramic view.

Every Friday, 12.07. – 30.08.2019

Meeting point: 1 hour before sunrise at the
bus turning point at Skihütte
(Pfannspitz gondola lift)

FEE FOR THE GUIDED TOUR, LIFT TICKET AND BREAKFAST
€ 45,00 FOR ADULTS
€ 38,00 WITH THE BRIXENCARD

Törggele-hike in autumn

Experience a hike during autumn when locals do "Törggelen". You experience this tradition with a walk through vineyards and a tasting of the new wines.

Every Tuesday and Friday, 17.09. – 02.11.2019

Meeting point: at 10 a.m. at the Tourist Info
Brixen, Regensburger Allee 9

FEE, WINE TASTING INCLUDED
€ 15,00 FOR ADULTS
€ 8,00 WITH THE BRIXENCARD

Bike program

REGISTRATION AT PLOSE BIKE
INFO@PLOSEBIKE.COM
T +39 339 64 45 548

BE GUEST IN ONE OF OUR BIKE
PARTNER ACCOMMODATIONS
AND PAY 40 INSTEAD OF 60 €.

WWW.BRIXEN.ORG/BIKE

STS SCALA:
S0 - S1: EASY
S2: MODERATE
S3: DIFFICULT

ALL TOURS CAN BE MADE BY
MTB OR EMTB

What you need for a perfect bike tour at Brixen: Good preparing and planning, respect for the others and for nature and responsibility for your behaviour on the road. Ride Fair!

The bike tours are organized by the Brixen Tourism Association in cooperation with the bike school PloseBike.

Plose 360 °

Enjoy the unique view on the Plose and stop to enjoy the panorama. Lunch in a hut on the way.

STS: S0 - S2
FITNESS: ●●●○○
METRES IN HEIGHT:
CA. 700
KM: CA. 30
CROSS COUNTRY
SHUTTLETOUR (FROM
BRIXEN TOURIST
INFO TO THE VALLEY
STATION OF THE PLOSE
GONDOLA LIFT)

Sellaronda

A good fitness mixed with experience are essential on this tour to master the numerous climbs and descents. Although the railways do the most meters of altitude, be careful: the almost 4,000 meters of descent are quite a challenge and demand a lot of strength.

If you choose this route, you should have mastered S2 Trails without any problems and not be afraid of S3 passages. The route leads over several single trails, but also over hiking trails and forest roads, which are not exclusively used by bikers, so the rule in any case is: Respect the others!

STS: S0 - S3
FITNESS: ●●●●○
METRES IN HEIGHT:
CA. 330
METRES OF DESCENT:
CA. 3.900
KM: CA. 58
ENDURO
SHUTTLETOUR
(FROM THE TOURIST
INFO BRIXEN TO
DANTERCEPIES)



Stoanamandl summit and trail fun

After a comfortable ascent, this tour offers a magnificent view of the surrounding mountains. From Stoanermandl summit in Jochtal we return to Brixen on trails with short, rough sections.

STS: S0 – S2
FITNESS: ●●●○○
METRES OF HEIGHT:
CA. 700
KM: CA. 30
CROSS COUNTRY
SHUTTLETOUR (FROM
THE BRIXEN TOURIST
INFO TO SCHABS AND
FURTHER TO SPINGES)

BOOK THE BIKE CAMPS
AS A PACKAGE

WWW.PLOSEBIKE.COM
T +39 339 64 45 548

Villnöss

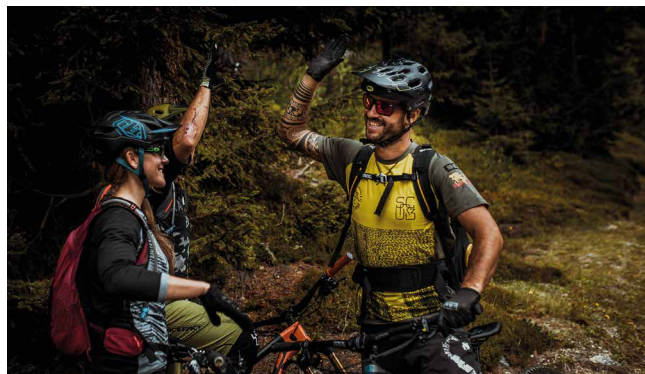
Enjoy the beautiful nature at the foot of the Dolomites in the Villnöss Valley with your e-bike.

FITNESS:
FOR E-BIKES: ●○○
METRES OF HEIGHT:
CA. 1450
KM: CA. 30
E-BIKE
SHUTTLETOUR (FROM
BRIXEN TOURIST INFO
TO ST. MAGDALENA)

Across the villages on Mount Plose with technical training

The motivation to improve yourself on technical trails uphill and downhill drives you? Then this all-round tour combined with technical training is the right thing for you!

STS: S0 – S2
FITNESS: ●●●○○
METRES OF HEIGHT:
CA. 700
KM: CA. 30
CROSS COUNTRY



Bike-Camps Plose Bike

Kids Flowride Camp

Riding technique camp for our young bikers (minimum of 4 kids)
5 units: 12.08. – 16.08.
8 units: 02., 05., 09., 19., 23., 26., 30.08.
& 02.09.

Women´s Trail Camp

Fast descents and cool jumps are pure men's business? Not at all... riding technique camp for women (minimum of 4 women)
13. & 14.06., 29. & 30.06., 07. & 08.09.

Trail Days 2019

It's a wild ride. Improve your own skills on the trails. Riding technique training from the age of 16 (minimum of 4 people)
24. & 25.08., 14. & 15.09.

Sunrise tour - breakfast included

Start your day right E-bike Tour, daily on request

Daily Workshops

2 hours of riding technique training in different levels of difficulty - from beginners to experts (minimum of 3 people)

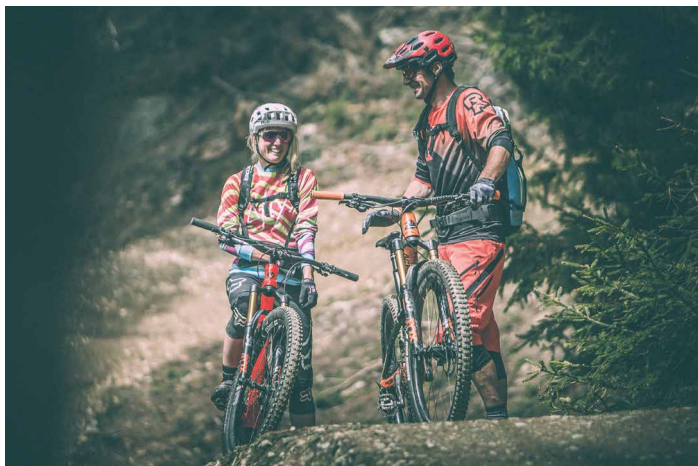
Bike meets Yoga

Biking and Yoga-session in front of the Aferer Geisler peaks (minimum of 4 people)
06.07., 03.08. or on request

Bike-Camps BrixBike

INFO & BOOKING
WWW.BRIXBIKE.IT
T +39 0472 835 154

The bike school BrixBike offers a varied program together with three bike hotels in Brixen and surroundings. From the beginning of April to the middle of November, enthusiastic bikers can enjoy an exclusive offer with competent touring experts from of the South Tyrolean bike scene.



Rush E-Motion Bike

Not far from the city centre you will find Rush E-Motion Bike and its selection of bikes and equipment. His assortment includes children's bikes, city bikes, mountain bikes or e-bikes, helmets, protectors or tools. Here you will find everything you need for a bike tour in Brixen and its surroundings.

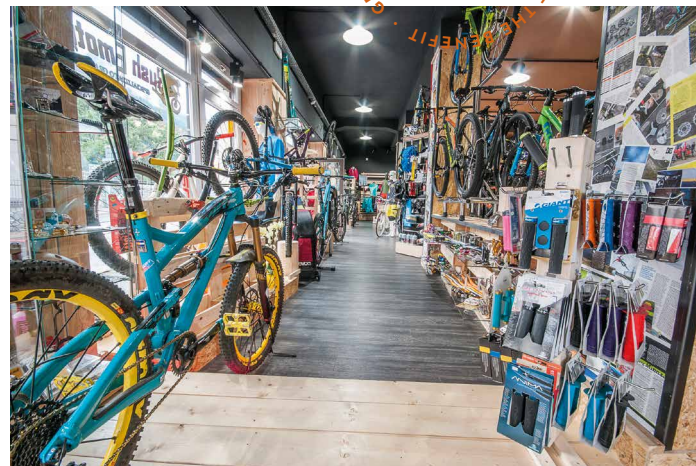
Rental of enduro mountain bikes and e-bikes, city bikes and bike equipment.
Rental from € 16.

Dantestraße 14, Brixen
rushemotionbike@gmail.com

BRIXENCARD
10 % DISCOUNT ON THE
RENTAL OF BIKES AND
EQUIPMENT

BRANDS:
FOCUS
SANTA CRUZ
SPECIALIZED

T +39 0472 836 398
T +39 347 743 83 44



The old town of Brixen and cultural highlights around the city

As the oldest city of Tyrol, Brixen has a lot to offer with its culture and history. On the traces of medieval frescoes, magnificent walls and winding alleys you can rediscover the more than 1,000-year-old past.

The heart of Brixen: the cathedral square and its treasures

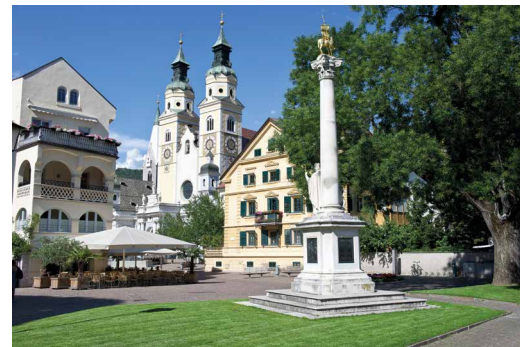
SIGHTSEEING IN THE OLD TOWN OF BRIXEN

The two towers of the cathedral in the middle of the city rise to the sky. The church is one of the most important sacral buildings in the Alps and its origins date back to the 10th century AD. In the 18th century (Baroque) there was a last major reconstruction phase. The building was completed with a classicistic vestibule. The cathedral district also includes a beautiful cloister, the beginnings of which can be found in the Romanesque period. In the 14th century it was vaulted with a Gothic groined vault and frescoed.

OPENING TIMES OF
THE CATHEDRAL AND
THE CLOISTER:
DAILY FROM
6 A.M. – 6 P.M.

IN NOVEMBER, AS
WELL AS JANUARY
TO EASTER CLOSED
FROM 12 – 3 P.M.

FREE GUIDED TOURS:
FROM EASTER TO ALL
SAINTS DAY ON
WEEKDAYS AT
10.30 A.M.
IN GERMAN AND
ITALIAN



The Hofburg

SIGHTSEEING IN THE OLD TOWN OF BRIXEN

The Hofburg district is one of the most important sights in Brixen. The Hofburg was built in the 13th century by the prince bishops of Brixen and rebuilt again and again in the following centuries. While the Hofburggarten garden on the south side is not open to the public, the Herrengarten garden is an oasis of peace for the many guests of the town. Today the Hofburg is marked by the Baroque era and houses the Diocesan Museum and the Diocesan Archives.

GUIDED TOURS IN GERMAN AND ITALIAN

Around the Hofburg

on Thursdays at 2 p.m. in German and at 3 p.m. in Italian

A summer evening in the museum

on Wednesdays in July and August at 8.30 p.m.

EXHIBITIONS

Brixen in old pictures

15.03. – 31.10.2019

Graphics and drawings show city views from the 16th to the 20th century

Rendezvous with the city of Regensburg

17.05. – 11.08.2019

Art treasures from the 10th to the 20th century



OPENING TIMES

15.03. – 31.05.2019,

01.09. – 31.10.2019

TUE – SUN

10 A.M. – 5 P.M.

01.06. – 31.08.2019

DAILY, 10 A.M. – 6.30 P.M.

GOOD FRIDAY,

19.04.2019,

10 A.M. – 2 P.M.

FEE

€ 8,00 ADULTS

ONE-TIME FREE

ADMISSION WITH THE
BRIXENCARD

WINTER OPENING

TIMES: COLLECTION
OF CRIBS

29.11.2019 – 06.01.2020

DAILY 10 A.M. – 5 P.M.

24./25.12.2019

CLOSED

FEE

€ 5,00 ADULTS

T +39 0472 830 505

WWW.HOFBURG.IT

GUIDED TOURS

FROM EASTER TO
EPIPHANY DAY, EVERY
SATURDAY AT 10.30 A.M.

JUNE TO SEPTEMBER
ALSO ON THURSDAYS
AT 9 P.M.

REGISTRATION

T +39 0472 837 034
RASTNERALOIS@HOT-
MAIL.COM
GROUPS ON REQUEST
IN GERMAN AND
ITALIAN

MEETING POINT:
WHITE TOWER

ADMISSION AND
GUIDED TOUR
€ 5,00 PER PERSON
ONE-TIME FREE
ADMISSION WITH THE
BRIXENCARD

The White Tower (Weißer Turm)

SIGHTSEEING IN THE OLD TOWN OF BRIXEN

The 72 m high Gothic tower of the church of St. Michael is one of the landmarks of the city of Brixen, along with the two towers of the cathedral. Typical are the four oriel windows behind which the fireman's room was located until the Second World War.

Pharmacy Museum Brixen

SIGHTSEEING IN THE OLD TOWN OF BRIXEN

The history of the pharmacists family Peer is over 400 years old. You will experience exactly this past during a visit to the Pharmacy Museum in Brixen. In addition to special exhibits on the production of pharmaceuticals such as tablet presses, pill rakes or suppository forms, there are also exhibits describing the progress and changes in pharmacy over the past centuries.

Exhibitions: Spices

Collective exhibition with the museum association "Wohl bekomm's - Alla salute - Stame bën!" until February 2021

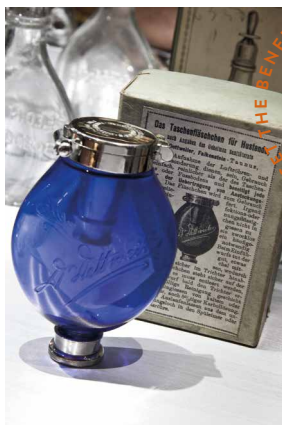
OPENING TIMES

TUE AND WED 2 - 6 P.M.
AND SAT 11 A.M. - 4 P.M.
IN JULY AND AUGUST,
MON TO FRI 2 - 6 P.M.,
SAT 11 A.M. - 4 P.M.

GUIDED TOURS
AND EDUCATIONAL
MUSEUM ACTIVITIES
ON REQUEST.

FEE
€3,50 ADULTS
ONE-TIME FREE
ADMISSION WITH THE
BRIXENCARD

T +39 0472 209 112
PHARMAZIEMUSEUM.IT



Augustinian monastery Neustift

SIGHTSEEING IN THE SURROUNDINGS OF BRIXEN

The monastery is one of the most impressive sights in South Tyrol, with its angelic castle, the late baroque Stiftskirche church, the Gothic cloister, the Wunderbrunnen fountain, the library and the historic Pinakothek.

FEE
€ 9,00 ADULTS
ONE-TIME FREE
ADMISSION WITH THE
BRIXENCARD

T +39 0472 836 189
KLOSTER-NEUSTIFT.IT

Guided Tours

in English and French on request
Mon - Sat at 11 a.m. and 3 p.m.,
groups at 10 a.m., 2 and 4 p.m.,
at Christmas time also at 12 and 1 p.m.

Guided Garden Tours

In English and French on request from
May to October, Mon, Wed & Fri 10.30 a.m.



Restaurant Pacher (a 10 minutes walk from the Abbey)

In a welcoming atmosphere we serve traditional and modern South Tyrolean dishes, with a Mediterranean flair. As soon as the temperatures allow, we open our sun-drenched garden in the midst of the Neustift vineyards.

www.hotel-pacher.com | T +39 0472 836 570

Franzensfeste Fortress

SIGHTSEEING IN THE SURROUNDINGS OF BRIXEN

The Franzensfeste Fortress was built in 1833-39 by the Austrian Emperor Franz I and named after him. Even though this defensive structure was never really used for battles, it was still considered to be the strongest fortress in Europe.

Guided tours

May – October: Tue – Sun at 11 a.m. and 3 p.m. without registration.
In German and Italian

Exhibition: Crossing the border

Julia Bornefeld & Michael Fliri
until 3 June 2019

NOVEMBER – APRIL
TUE – SUN
10 A.M. – 4 P.M.

MAY – OCTOBER
TUE – SUN
10 A.M. – 6 P.M.

THE MUSEUM REMAINS
CLOSED IN JANUARY
AND FEBRUARY

FEE
€ 7,00 ADULTS
ONE-TIME FREE
ADMISSION WITH THE
BRIXENCARD

T +39 0472 057 200
FRANZENFESTE.INFO



Castle Velthurns

SIGHTSEEING IN THE SURROUNDINGS OF BRIXEN

The castle was the former summer residence of the prince bishops of Brixen. The interiors are decorated with magnificent panelling and Renaissance murals.

GUIDED TOURS

15.03. – 15.11.
TUE-SUN AT 10 AND
11 A.M., 2.30 AND
3.30 P.M.

JULY AND AUGUST
ALSO AT 16.30
IN GERMAN AND
ITALIAN

BETWEEN 12 AND 2.30
P.M. THE CASTLE CAN
BE VISITED WITH AN
AUDIO GUIDE.

FEE
€ 5,00 ADULTS
ONE-TIME FREE
ADMISSION WITH THE
BRIXENCARD

T +39 0472 855 525
INFO@SCHLOSSVELT-
HURNS.IT



Christmas Market Brixen

28.11.2019 – 06.01.2020

The smell of cinnamon in the air, christmas music playing in the background, a sea of lights around the city, shopping and tasting delicacies at the Christmas market. Feel the magic of Christmas in Brixen.

www.brixen.org/christmas

Leisure and mountain experience

A jogging session on the banks of the Eisack river and cooling off your feet while "kneipping", enjoy the fantastic panorama while biking or skiing on the Plose. Both in summer and in winter you can choose the activities in Brixen and explore its wonderful surroundings in many ways.

BOWLING

Brixen, Acquarena
Altenmarktgassee str.
28/b
T +39 0472 262 510

St. Andrä Sports Area
Leonharderstr. 20
T +39 0472 850 150

Vahrn Bar Voitsberg
Voitsbergstr. 5
T +39 0472 832 348

CINEMA

Filmclub Brixen
at Forum Brixen
T +39 0472 275 588
from October to May on
mondays at 8 p.m.

Stella Kino
Altenmarktgassee str. 8
T +39 0472 836 408
in German and Italian
language
www.stellakino.com

FISHING

**Fishing pont at
Untersee lake in Vahrn**
without licence
Brennerstr. 125
T +39 339 13 70 409

HORSEBACK RIDING

**School of Riding
Brixen**
T +39 335 691 2110

**Horse riding with
Matt Niederwieser**
T +39 335 527 0646

ICE RINK

Sports Area South
Fischzuchtweg street 21
Open from end of
October to end of
March – public skating
rink
T +39 0472 837 697
www.brixen.it

KNEIPP

**Kneipp-Experience at
the Schalderer Bach
torrent**
with children's play-
ground and large
sunbathing lawn

MINIGOLF

**Vahrn,
Hotel Löwenhof**
Brennerstr. 60
T +39 0472 836 216
open from Easter to All
Saints

PARAGLIDING

**Para Tandemteam -
Priller Florian**
T +39 333 67 99 316
[www.para-tandem-
team.com](http://www.para-tandem-
team.com)
**Tandemfly -
Joe Oberrauch**
T +39 345 70 21 521
www.tandem-fly.it

RAFTING

Rafting Club Sterzing
T +39 0472 764 809
T +39 335 137 0560

Rafting Club Aktiv
T +39 0474 678 422
rafting-club-aktiv.com

RIVER-SURFING

Introductory courses
on Thursdays at 6 p.m.
T +39 348 137 89 52 or
+39 347 509 84 85

SWIMMING POOLS, LAKES AND SAUNA

Acquarena
Indoor and Outdoor
Pools as well as Sauna
and Wellness
Altenmarktgassee street
28 b
Open all year.
T +39 0472 268 433
www.acquarena.it
**BrixenCard: a 3 h free
admission to the pool
area, reduced admission
to the sauna area (except
Sundays and public
holidays)**

**Natural bathing pond
Lüsen**
open from mid-June to
mid-September, daily
from 10 a.m. – 6.30 p.m.
T +39 0472 413 724

TENNIS

Brixen
Brennerstr. 8,
T +39 0472 835 133
tennisbrixenbressanone.it

Neustift
Stiftstr. 22,
T +39 0472 832 140

St. Andrä Sports Area
Leonharderstr. 20,
T +39 0472 850 150

Vahrn
Alte Straße 18,
Bar Sportwirt
T +39 0472 971 347

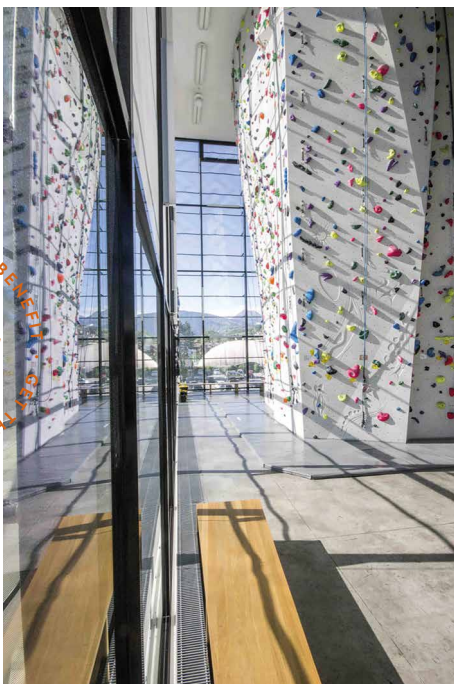
Vertikale Brixen

Climbing centre in the middle of the city of Brixen with 1,900 sqm of climbing surface. Climbing and bouldering on your own or under the supervision and guidance of an instructor.

Climbing Hall at Am Priel street 9
www.vertikale.it

BRIXENCARD
15 % DISCOUNT

OPEN ALL YEAR
MON – FRI 12 – 10.30 P.M.
SAT 10 A.M. – 10.30 P.M.
SUN 10 A.M. – 8.30 P.M.



GET THE BENEFIT . GET THE BENEFIT . GET THE BENEFIT .
BRIXEN CARD
GET THE BENEFIT . GET THE BENEFIT . GET THE BENEFIT .

Villnöss high ropes course

In a unique panorama under the Geisler peaks in the Villnöss valley, our high ropes course is only 50 m away from the Ranui car park, directly in the forest. 12 parcours and about 120 stations at different heights with suspension bridges, balance beams, cable cars and other challenges, as well as a climbing tower with 4 levels of difficulty. For the little ones from 3 years a play-climbing course. An experience with adrenalin kick for the whole family.

Ranui/St. Johann
www.hochseilgarten-villnoess.it

15 % DISCOUNT ON THE
FAMILY TICKET (2 ADULTS
+ 2 CHILDREN)

APRIL TO MID-JUNE AND
MID-SEPTEMBER TO THE
END OF OCTOBER:
ON REQUEST

FROM MID-JUNE TO
MID-SEPTEMBER: DAILY
FROM 9 A.M. – 6 P.M.

T +39 0472 840 602
T +39 348 320 04 43
T +39 338 410 04 59



Salt cave Brixen - Halotherapy

We invite you to relax in our nature inspired salt cave. The clean, sodium-saturated microclimate supports the immune system for both children and adults and lets you recharge body and soul. Visit us in Brixen's unique salt cave!

Children are always welcome! They enjoy playing in the salt and having fun while naturally boosting their immune system.

Brixen/Milland, Plosestraße 10 C
www.salzgrottebrixen.net

BRIXENCARD
30 % DISCOUNT ON A
REGULAR SALT CAVE TICKET

MO – FR 10 AM – 8 PM
SA + SO 2 PM – 7 PM

T +39 0472 672 070
INFO@SALZGROTTEBRIXEN.NET



Skytrek- Adventure Parc in Sterzing/ Vipiteno

On 2 training high ropes courses, 1 kids' route, 1 kids' zipline, 1 climbing tree in up to 15 m of height and 6 other routes of different levels of difficulty children as well as adults have fun, adventure and adrenaline amidst tree tops as well as relax in nature. Courage, ability and talent – you will get to know your limits! Our hammocks amidst trees and our hanging tents are there to relax. Look forward to a wonderful and relaxing day with thrilling obstacles and 80 elements.

New 2018: Flying Fox of more than 60m, get from one tree to the next and get softly back down to earth

New 2019: new structures and courses

Skytrek at Nordpark/bus parking in Sterzing. Directly at the valley station of the skiing area Rosскоп
www.skytrek.it



BRIXENCARD
15 % DISCOUNT ON
SINGLE AND FAMILY
TICKETS

MAY – JUNE, SEPT. –
OCT.: WE – SU FROM
10 A.M. – 6 P.M.

JULY – AUGUST: DAILY
FROM 10 A.M. – 7 P.M.

T +39 345 865 25 30
INFO@SKYTREK.IT

Südtirolrad

Brixen, an exciting bicycle experience

Rent your bicycle directly at the railway station and reach the medieval downtown and explore the cultural landscape of Brixen and its surroundings.



BRIXENCARD
10 % DISCOUNT
ON THE BIKE RENTAL

04.05. – 31.10.2019
09 A.M. – 12 P.M. AND
13 – 18 P.M.

UP TO 3 HOURS:
€ 15,00 ADULTS
€ 7,00 CHILDREN
1 DAY:
€ 19,00 ADULTS
€ 12,00 CHILDREN

IF THE BIKE IS
RETURNED AT THE
STARTING POINT



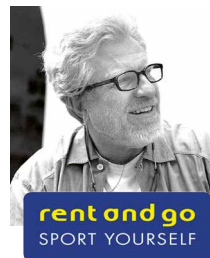
South Tyrol bicycle day trips

470 km of cycling paths slightly downhill with a bicycle or e-bike. Choose a day trip, rent a bike, leave it at one of the 22 bike rentals in the region and return by train.

Bike rental Brixen at
the train station
www.suedtirol-rad.com



**Südtirol Rad
Bici Alto Adige**
Verleih | Noleggio | Rental



SPORTSERVICE
ERWIN STRICKER
since 1950

rent and go
SPORT YOURSELF

Sant.Andrea-Plose
www.rentandgo.it



We offer a wide range of skis and equipment, including the latest race carvers, ski boots and snowboards, as well as toboggans. Our brands are Völkl, Salomon, Atomic, Stöckli, Fischer, K2, Burton, Tecnica, Nordica and Dalbello. We use state-of-the-art technology to groom your equipment with maximum professionalism, expertise and skills. The consistent quality of our services guarantees maximum safety, comfort and fun for our customers.

Valley station of the Plose gondola lift
www.rentandgo.it



BRIXENCARD
15 % DISCOUNT ON
TOBOGGAN RENTAL
AND SKI SERVICE

BRANDS:
VÖLKL, SALOMON,
ATOMIC, STÖCKLI,
FISCHER, K2, BURTON,
TECNICA, NORDICA
AND DALBELLO



WINTER SEASON
8.30 A.M. – 5.30 P.M.

T. +39 0472 850 077
BREZZANONE@
RENTANDGO.IT

Gilfenklamm gorge – A nature play in white marble near Vipiteno

The Gilfenklamm is a gorge in pure white marble and stretches from the village Stanghe into the Val Racines to the hamlet of Ponte Giovo. Wooden bridges and runways lead through the canyon and give a spectacular sight to the waterfalls. The primordial power of the water is tangible with all senses. The gorge is protected as a natural monument and is known as one of the most beautiful natural attractions in the Alpine region. The hike through the gorge lasts nearly one hour (1,5 hours with return) and is worthwhile for nature lovers, families and seniors.

Point of departure: Stange
Height gain: 175m
Walking time: approx 1 hour up, 30-45 min down

Stanghe, 39040 Racines-Ratschings
www.ratschings.info



BRIXENCARD
SAVE € 0,50 ON THE
REGULAR ADMISSION
RATE OF € 4,- PER
PERSON

MAY, JUNE, SEPT.,
OCT. 9 A.M. – 5 P.M.
JULY AND AUGUST
9 A.M. – 6 P.M.

T +39 0472 760 608

Summer at Mount Plose



Hiking on the Plose

With the Plose gondola lift at 2,050 m: wonderful panoramic hikes, summit tours and adventure hikes for the whole family on the Woody Walk and the **NEW RABALBA walking path**. Traditional mountain huts to stop for refreshments.

PLOSE GONDOLA LIFT
25 MAY – 13 OCTOBER
25.05. – 08.09., 9 A.M. – 6 P.M.
09.09. – 13.10., 9 A.M. – 5 P.M.

PFANNSPITZ GONDOLA LIFT
15 JUNE – 06 OCTOBER
9 A.M. – 12.15 P.M. & 1 – 5 P.M.

PALMSCHOSS CHAIRLIFT
15 JUNE – 13 OCTOBER
9 A.M. – 5 P.M.

PLOSE ROPEWAYS
T +39 0472 200 433
WWW.PLOSE.ORG

BRIXENCARD
ONE RETURN TRIP A DAY
WITH THE PLOSE GONDOLA
LIFT, THE PFANNSPITZ
GONDOLA LIFT AND ALSO
WITH THE PALMSCHOSS
CHAIR LIFT

TIP



Plosehütte mountain hut

360° panoramic view, a cosy mountain hut and a panoramic platform only a few minutes away. From the mountain station of the Pfannspitz gondola lift to the hut in only 20 minutes.

Opening times 25.05. – 13.10.19 and 07.12.19 – 29.03.20
www.plosehuette.com | T +39 0472 521 333



MountainCarts

Every Tuesday, Thursday and Sunday on the 9 km long MountainCarts track. During the week from 10 to 18 August daily.

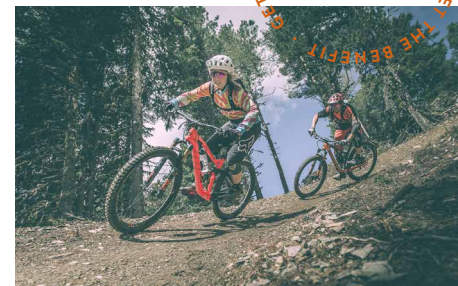
Information at
Rent and Go – Sportservice Erwin Stricker
T +39 0472 200 433
siegfried.prosch@sportservice.bz

Brixen Bike Park

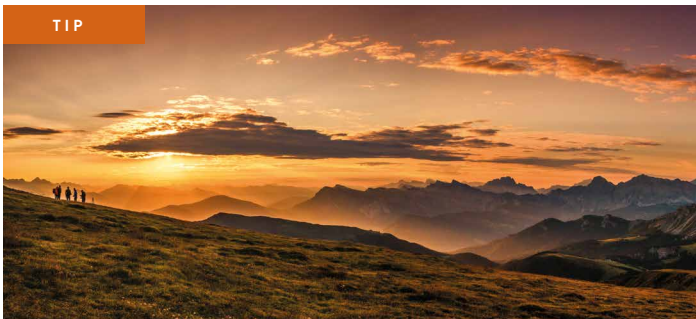
4 lines of different levels of difficulty for beginners, professionals and families. Accessible with the Plose gondola lift and with the Palmschoß chairlift.

INFORMATION AT
WWW.BRIXEN.ORG/BIKE

BRIXENCARD
DISCOUNTED BIKE PASS



TIP



Great Cinema

EVERY FRIDAY FROM 12 JULY TO 30 AUGUST

Sunrise hike to mount Gabler on the Plose. Take the Pfannspitz gondola lift to the mountain station and walk to the summit in only 45 minutes - on your own or guided.

www.brixen.org

TIP



MOUNTAINBIKE Festival

19 - 22 SEPTEMBER

Mountain bikers get the chance to test brand-new bikes and parts and enjoy an extensive supporting program: Guided tours in various skill levels, technique training and many more.

www.mountainbike-testival.de



GET THE BENEFIT · GET THE BENEFIT · GET THE BENEFIT ·
BRIXEN CARD
 GET THE BENEFIT · GET THE BENEFIT · GET THE BENEFIT ·

Winter on Mount Plose

Skiing Area Plose

A breathtaking panorama and the sun as a steady companion - that's what you get when skiing on the Plose. 42 km of pistes, 7 lifts and a total of 21 runs for all levels. A highlight: the 9-kilometer Trametsch, the longest run in South Tyrol. The ski huts on the Plose offer great local food for the perfect skiing day.

07 DECEMBER 2019 TO
29 MARCH 2020

OPENING HOURS
PLOSE GONDOLA LIFT
8.45 A.M. – 4.30 P.M.

OPENING HOURS
PLOSE LIFTS
9 A.M. – 4.30 A.M.

PLOSE SKI AG
T +39 0472 200 433
WWW.PLOSE.ORG

BRIXENCARD
ONE RETURN TRIP A DAY
WITH THE PLOSE
GONDOLA LIFT, THE
PFANNSPITZ GONDOLA
LIFT AND ALSO WITH THE
PALMSCHLOSS CHAIR LIFT

The Plose ski area offers not only perfect slopes but also a lot for winter lovers. The toboggan hike to the Rossalm or the winter hiking trail to Skihütte make you feel pure nature. Those who like it a little more action-packed should go down the 9 km long RudiRun toboggan run. There are also great trails for snowshoe hikes or a ski tour.



Guided snowshoe hike

Every Friday and Sunday at 10 a.m.
Meeting point nr. 2 of the skischool
Registration and Information
at Plose skischool

T +39 0472 850 040
INFO@PLOSESKISCHULE.IT

FEE
€ 15,00 ADULTS
FREE OF CHARGE WITH BRIXENCARD



Shopping and Cuisine

Forget time during a leisurely shopping tour, try delicacies and shop for the latest trends. Wander through the old town of Brixen and enjoy the sun over an Italian espresso or a glass of white wine. Brixen - a small town offering a great variety.



Shopping

AT THE OLD TOWN

MOST SHOPS IN THE OLD TOWN OF BRIXEN ARE OPEN FROM MONDAY TO SATURDAY AT THE FOLLOWING TIMES:
MON - FRI 9 A.M. - 1 P.M. AND 2.30 - 7 P.M.
SAT 9 A.M. - 1 P.M. AND 2 - 6 P.M.

WWW.BRIXEN.ORG

Brixen, where you enjoy shopping to the fullest. Stroll through the cosy alleys and look at the lovingly designed shop windows. Explore traditional shops, modern boutiques and small delicatessens and find some secret shops under the arcades of the old town of Brixen. A complete offer for culinary lovers, fashion addicts and pleasure-seekers.



Cuisine

Cosy, elegant or rustic restaurants and inns present a wonderful combination of traditional South Tyrolean food, modern cuisine and classic Italian specialities. Fine pastry shops, trendy cafés and special wine bars also invite you to taste fine creations.



White wine from the Eisacktal Valley

The many vineyards around Brixen show the importance of wine in this area. Specialised wineries produce excellent fresh white wines in Italy's northernmost winegrowing region. Müller-Thurgau and Sylvaner as well as Kerner and Riesling from Brixen and Neustift are known far beyond the borders.

You will find opportunities for tastings and visits to wineries at www.brixen.org

TIP



South Tyrolean Gasthaus Fink Inn

Kitchen open from 11 – 22 o'clock.

In the heart of the old town of Brixen, in the middle of the small arcades, the historic, family-run Gasthaus Fink Inn awaits you all day with South Tyrolean specialities made from the best regional ingredients.

www.restaurant-fink.it | T +39 0472 834 883

Törggelen

The traditional Törggelen is celebrated every year when the leaves are coloured: Walk through the vineyards, enjoy nature during the golden autumn and stop at the centuries-old farms to taste the new wine and delicious local specialities.

Find the offer for Törggelen in Brixen and its surroundings at www.brixen.org

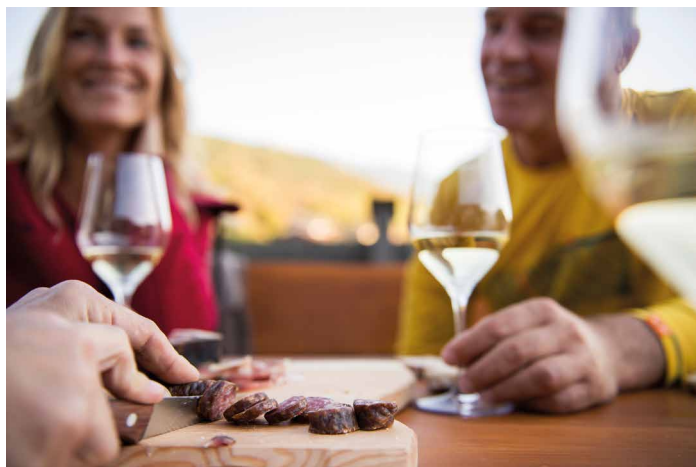
The Oberrauch Zitt World of Loden

Shearing sheep, spinning thread, dying and weaving. Fulling, watching seamsstresses at work in the witches' kitchen. Experience at first hand the entire process from the sheep through to the finished article of clothing. The unique exhibition on the manufacture and history of Loden cloth. A sensory experience for the whole family with an outdoor animal enclosure, museum, in-house manufacture, sales and Lodenwirt hotel and restaurant.

BRIXENCARD
10 % DISCOUNT

OPEN ALL YEAR
MON - SAT
9 A.M. - 5.30 P.M.
JULY AND AUGUST
9 A.M. - 6.30 P.M.
28.07. - 27.10.
ALSO ON SUNDAYS
FROM 10 A.M. -
4.30 P.M.

Pustertalerstr. 1, Vintl
www.oberrauch-zitt.com/lodenwelt





In harmony
with nature.

Bergila
BIO

Mountain pine oil distillery & herb garden

See for yourself how organically grown essential oils are produced in a 100-year-old pine oil distillery. A walk in the herb garden lets you take in all the scents and colours of nature.

Production and sale of organic essential oils and herbal products.



GET THE BENEFIT • GET THE BENEFIT • GET THE BENEFIT
BRIXEN CARD

FREE GUIDED TOURS FROM MAY TO THE END OF OCTOBER (EVERY 30 MINUTES)
MON – FRI, 8 A.M. – 12 P.M. AND 2 – 6 P.M.
JULY AND AUGUST OPEN DAILY
HERB SHOP OPEN ALL YEAR,
ALSO SAT. 9 A.M. – 12 P.M.

WEIHERPLATZ 8
39030 ISSING / PFALZEN
T +39 0474 565 373
WWW.BERGILA.IT

BRIXENCARD
10 % DISCOUNT ON
ORGANIC HERBAL
PRODUCTS



G. SIEBENFÖRCHER

Köstliche Tradition

Deliziosa tradizione . Fine food and great pleasures



Brixen/Bressanone
Altenmarktgasce 22
via Mercato Vecchio 22
Tel. 0472 835 681
www.siebenfoercher.it

METZGEREI & FEINKOST



Aus Tradition gut

SEIT 1930

Mo-Fr: 8.30 - 19 h
Sa: 8 - 18 h

Good to know / useful details

In order to avoid any questions before and during your holiday, here are the most important contacts for your stay in Brixen/Bressanone.

IN CASE OF EMERGENCY CALL

112

BABYSITTING

**Sozialgenossenschaft
Verein Tagesmütter**
Elisabeth Larcher
T +39 347 46 01 005
Großer Graben str. 26,
2nd floor, open on Tuesdays from 9 – 11 a.m.
larcher@tagesmutter-bz.it

Eltern-Kind-Zentrum
(parent-child centre)
Dantestr. 29,
T +39 0472 802 134
brixen@elki.bz.it
www.elki.bz.it

BANKS

**Bank für Trient und
Bozen**
Großer Graben str. 22
T +39 0472 836 734

**Raiffeisenkasse
Eisacktal**
Großer Graben str. 12
T +39 0472 824 000

Sparkasse
Großer Graben str. 6/B
T +39 0472 823 811

Südtiroler Volksbank
Kleine Lauben str. 2
T +39 0472 811 213

Unicredit Banca
Großer Graben str. 15
T +39 0472 097 004

BREAKDOWN SERVICES

The service includes on-site assistance where

possible, otherwise towing to the nearest garage. Free of charge for members of the A.C.I. or foreigners with a safety certificate.

A.C.I. (Italian automobile club) office
Kleiner Graben Street 2
T +39 0472 833 792
Mon – Fri from 8.30 – 12.30 a.m. and 3.30 – 6 p.m.

BUSES AND TRAINS

Service number
T +39 0471 551 155
(abroad) from Mon to Sat 6 a.m. to 8 p.m. and on Sun and holidays from 7.30 a.m. to 8 p.m.

**Infopoint Mobile
Information and
sale of bus and train
tickets**
Kreuzgasse str. 10
T +39 0472 970 695
info@infopointmobile.it
from Mon to Fri 8 a.m. – 1 p.m. and 2 – 6 p.m.,
Sat 8 a.m. – 1 p.m.

Train station Brixen
Bahnhofplatz square 1
Service number
89 20 21 (only in Italy)
Counter service
Mon – Sat 6.15 a.m. – 8 p.m., Sun and holidays
8.10 – 12.30 p.m. and
1.40 – 4.30 p.m.,
train tickets available;
www.trenitalia.com
www.bahn.de

Bus station Brixen
Dantestr. (near the university)

Tickets for the Citybus
available at various points of sale and at the Brixen Tourist Info

BUS PARKING FOR TOURING BUSES

Bus terminal in Regensburger Allee street (max. 15 minutes).
Parking only at Fischzuchtweg street

CAMPER SERVICE

24-hour sewage disposal and water connection service at the ESSO petrol station in Vittorio-Veneto street 57

CHURCH SERVICES

Catholic Church

Cathedral/Dom Brixen
in German on weekdays at 7 a.m.; Thu 9 a.m., Sun 8 a.m. (except during Christmas time) and 10 a.m., in Italian on weekdays at 8 a.m.

Church St. Michael
in German on Sun at 6 p.m., Sat at 5 p.m.; in German and Italian on Sun at 9 a.m. and 7 p.m.; in Italian on Sat at 6.15 p.m., Sun and holidays at 11 a.m.

Kapuzinerchurch
in German on weekdays at 7.30 a.m., Sun at 7 a.m. and 9.30 a.m.

Franziskanerchurch
in German on weekdays at 6.30 a.m., Sun at 7.30

a.m., in Italian on Sun and holidays at 9 a.m.

Freinademetzchurch in Milland/Millan

in German on Sat at 6 a.m. and Sun at 9 a.m., in German and Italian on Wed at 8.30 a.m.; in Italian on Sun and holidays at 10.30 a.m. and Tue at 6 p.m.

Afers/Eores

in German on Sun at 10 a.m.

St. Andrä/S. Andrea

in German on Sun 8.30 a.m.

Vahrn/Varna

in German on Sat 6.30 p.m., Sun at 9 a.m.; in Italian on Sun at 10.30 a.m.

Neustift/Novacella

in German on Wed 6 p.m. (Sep. – Apr.) and 7.30 p.m. (May – Aug.), Sun 6.30, 9.00 a.m.; in Italian on Sun at 10.30 a.m.

Franzensfeste / Fortezza

in German and Italian on Sun at 10 a.m.

Evangelical church

Brixen, Erhardschurch
every Sunday (Jul.-Sept) at 10 a.m. and on Christmas, New Year and on holidays

Vahrn free evangelical church

Salernstr. 4
sundays at 10 a.m.

ELECTRIC CHARGING STATIONS WITH 22 KW

in the Brennerstraße/Altenmarktgassee streets. PrePaid tickets are available at the Brixen Tourist Info and at Acquarena

GARAGES

Alfa Romeo

Garage Gasser
Brennerstr. 52
T +39 0472 835 638

BMW

Brixina
Julius-Durst-Str. 26
T +39 0472 836 427

Citroen, Peugeot

Filippi
Brennerstr. 106
T +39 0472 833 880

Fiat, Nissan

Werthauto
Karel-Havlicek-Str. 13/A
T +39 0472 831 377

Nordauto
Alfred-Ammon-Str. 18
T +39 0472 836 277

Ford

Garage Plose
Julius-Durst-Str. 34
T +39 0472 836 766

Opel, Peugeot

Bimobil
Vitt. Veneto Str. 67
T +39 0472 267 014

Renault

Garage Interauto
Erlenweg 8
T +39 0472 801 117

VW, Audi, Skoda, KIA

Auto Brenner
Bahnhofstr. 32
T +39 0472 519 400

HOSPITAL

Brixen

Dantestr. 51
T +39 0472 812 111
verw.dir@sb-brixen.it

First Aid

at the hospital of Brixen
T +39 0472 812 444
erstehilfe@sb-brixen.it

INFORMATION FOR YOUR TRIP TO THE MOUNTAINS

Alpenverein Südtirol (alpine club South Tyrol in Bozen/Bolzano)

Information about refuges, paths, tour planning, avalanche situation, mountain hut prices etc.
Mon-Thu 9 – 12 a.m. and 1 – 5 p.m.,
Fri 9 a.m. – 12 p.m.
T +39 0471 978 141
office@alpenverein.it
www.alpenverein.it

Alpenverein Südtirol (alpine club South Tyrol in Brixen)

Domplatz square 13,
open on Mon, Wed and Fri, 5 – 6.30 p.m.
T +39 0472 833 940
brixen@alpenverein.it

Mountain weather - weather service of the Province of Bozen

T +39 0471 270 555 and
T +39 0471 271 177
meteo@provinz.bz.it
provinz.bz.it/bergwetter

Avalanche information

T +39 0471 270 555 and
T +39 0471 271 177
lawine@provinz.bz.it
provinz.bz.it/lawinen

Webcam at Mount Plose
current situation and weather on the Plose
plose.org/service/webcam

LOST AND FOUND

City Police

Carduccistr. 5
T +39 0472 836 131
www.fundinfo.it

PARKING SPACES

Parking lot 1

north entrance of Brixen, Brennerstr. near Acquarena (chargeable)

Car park 2

Dantestr. 13
(on the main road),
+39 0472 835 314
(chargeable)

Parking lot 3

south entrance of Brixen, Fischzuchtweg str.

Car park Stufels

Cesare Battisti str.
(chargeable)

PHARMACIES

Fürstliche Hofapotheke

Kleine Lauben str. 2
T +39 0472 835 642

Peer Apotheke

Adlerbrückengasse str. 4
T +39 0472 836 173

Am Rosslauf

A. Schallerer Bachl str. 22
T +39 0472 201 714

Franziskus Apotheke

Millander Au 2/b
T +39 0472 833 038

Rosenapotheke Vahrn

Brennerstr. 101
T +39 0472 201 255

Mozartapotheke

Station Center
T +39 0472 834 588

POST OFFICE

Brixen

Kassianstr. 4
T +39 0472 272 011
(Mon to Fri from 8.20 a.m. – 7.05 p.m., Sat 8.20 a.m. – 12.35 p.m., in July and August only from 8.20 a.m. – 12.35 p.m.)

Franzensfeste

Bahnhofstr. 1
T +39 0472 458 618

Vahrn

Dorfstr. 7
T +39 0472 835 538

PUBLIC TOILETS

Bus station (50 Cent)

Regensburger Allee str.
at the Tourist Info

Schlachthofgasse str.
park (50 Cent)

Schwesternau str.
playing ground
(50 Cent)

Tre Fiori,
Bäckergasse str.

Tschampus,
Cathedral Square

TAXI UND KLEINBUS

Brixen

Taxizentrale

24h Service
T +39 0472 835 666

Driveservice

Gasser Hubert
T +39 333 79 99 440

Taxi Norby

T +39 334 81 56 701

Brunner Herbert

T +39 336 81 44 20

Leitner Raimund

T +39 347 43 24 522

Rabl Wolfgang

T +39 347 06 04 907

Vontavon Ingrid

T +39 349 75 14 380

Franzensfeste

Taxi Pollini

T +39 0472 458 687

Vahrn

Auto Tom

T +39 320 37 22 211

Pius Heidenberger

T +39 0472 853 533

Leitner

T +39 0472 833 752

RENTALS

Car Rental

ACI Global Nord Center

Julius Durst Str. 48
T +39 0472 268 073
info@aciglobalnord-center.it

AVIS - Bimobil

Vitt. Veneto Str. 67
T +39 0471 212 560
avis@bimobil.it

Brixia Rent Car
Alfred Ammon Str. 18
T +39 0472 802 452
info@nordauto.it

Garage Plose
Julius-Durst-Str. 34
T +39 0472 836 766
info@garageplose.com

Bike

Soracase
Kleiner Graben str. 5
T +39 0472 836 395
l.soracase@hotmail.it

Südtirol Rad
at the train station
Brixen
T +39 0473 201 500
05.05. – 31.10.

Hotel Krone
Mountainbike-rental
Stadelgasse str. 4
T +39 0472 835 154

Rush E-Motion Bike
Bike-rental and
equipment

Dantestr. 14,
T +39 0472 836 398

**rent and go – Sport-
service Erwin Stricker**
valley and mountain
station of the Plose
gondola lift
MTB and E-Bike
T +39 329 594 33 59
25.05. – 13.10.

Motorbike

**Brixina BMW
Auto & Moto**
Julius-Durst-Straße 26
T +39 0472 836 427
cep@activabmw.it

Rent a Bike Vahrn
Pustertaler Str. 4
T +39 0472 835 397
info@rent-a-bike.it
www.rent-a-bike.it

Prams

Südtirol Rad
at the train station
Brixen

T +39 0473 201 500
05.05. – 31.10.

**rent and go – Sport-
service Erwin Stricker**
valley and mountain
station of the Plose
gondola lift
T +39 329 594 33 59
25.05. – 13.10.
Attention: Only for hi-
king tours on the Plose

TRAFFIC REPORTING

T +39 0471 200 198
www.provinz.bz.it/vmz

WEATHER

Infodienst
T +39 0471 270 555
und 0471271177
weather.provinz.bz.it



YOUR WRAP FROM BEESWAX

Wrappeer

Supported by



Colophon

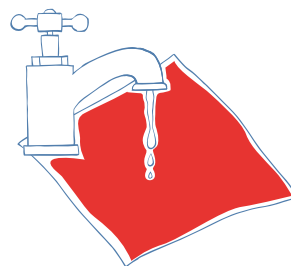
Brixen Tourism Association | Regensburger Allee str. 9 | 39042 Brixen
T +39 0472 275 252 | www.brixen.org | info@brixen.org

Content

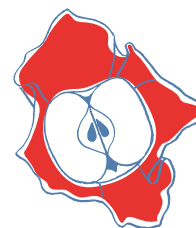
Brixen Tourism Association
Pictures Archive Brixen Tourism, Alex Filz, Dennis Stratmann, Georg Hofer, Helmut Moling, Helmut Rier, Manuel Kottersteger, Matthias Gasser, Santifaller Photography, Florian Andergassen, Jürgen Eheim, WE ARE MUD/Philipp Buron
Print Kraler Druck
Layout Studio DIA

No guarantee of completeness

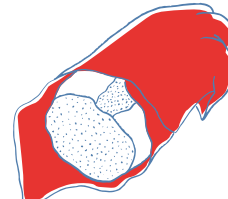
easy to clean



variously usable



works 1-2 years



Bio



Medium 10 € Large 12 €



euvita
GENUSS UND GESUNDHEIT / SALUTE CON GUSTO

Adlerbrückengasse 7, I-39042 Brixen





 **BRIXEN**
PLOSE
DAS DOPPELTE ERLEBNIS
IL DOPPIO PIACERE